



Corne keyboard case

▽ VOID

[VIEW IN BROWSER](#)

updated 11. 1. 2023 | published 11. 1. 2023

Summary

Corne case compatible with v2 and v3 hotswap PCBs and fr4 top plates.

[Gadgets](#) > [Computers](#)

Tags: [case](#) [corne](#) [crkbd](#) [keyboard](#) [wireless](#) [zmk](#)

Crkbd / Corne case compatible with v2 and v3 hotswap PCBs and fr4 top plates.

Buils pictured in this thing were purchased from [42keeps](#) (the kit includes pcbs, trrs jacks, reset switches, diodes and hotswap sockets, top and bottom plates, oled covers as well as an assortment of screws and standoffs; we made use of the covers, standoffs and top plates).

Big thank you to [eiga](#) for the videos including the [SLS PA12 nylon](#) version of the case, as well as [a transparent resin](#) print of it.

Files

- **corne_case_eiga_tented** - flat case design with custom tenting
- **corne_case_flat** - flat case design
- **corne_case_flat_5_col** - flat case design for 5 column pcb

- **corne_case_1.5d_600mah** - 1.5 degree outward slope, designed for nice!nano wireless builds; it has a tray for a [304050 3.7V 600mAh Li-Po battery](#) (attached w/ double sided tape)

Bill of materials

- 10 x m2x8mm countersunk screws - [aliexpress](#)
- 10 x m2x6mm button head screws - [aliexpress](#)
- 10 x m2x8mm female-female standoffs - [aliexpress](#) (for standard 1.6mm fr4 plates; if you plan on using thicker plates, such as 3mm acrylic ones, you will need to subtract the difference in thickness from the standoff, eg: 3mm plates would require 6.5mm standoffs)
- 8 x m5 socket head cap screws of various lengths according to your own preference, for the tenting version - [aliexpress](#)
- 8 x m5 locknuts, for the tenting version - [aliexpress](#)
- 4.7mm inner diameter rubber caps, for the tenting version - [aliexpress](#)

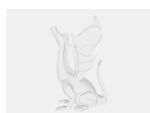
Misc

- battery life with 600mah Li-Po is ~2 months on the central half (60 days of usage with 20% remaining charge, own testing), 9+ months on the peripheral (tbc, quoted by the [zmk power profiler](#))
- battery life with 110mah Li-Po is ~1 week on the central half, ~3 weeks on the peripheral

Model files

corne_case_eiga_tented_left.stl

corne_case_eiga_tented_right.stl



corne_case_eiga_tented_right.step

corne_case_flat_left.stl

corne_case_flat_right.stl

corne_case_flat_5_col_left.stl

corne_case_flat_5_col_right.stl

corne_plate_5_col_right.stl

corne_case_15d_600mah_left.stl

corne_case_15d_600mah_right.stl

[Find source .stl files on Thingiverse.com](#)

License

This work is licensed under a
Creative Commons (4.0 International License)



Attribution—Noncommercial—Share Alike

- ✗ | Sharing without ATTRIBUTION
- ✓ | Remix Culture allowed
- ✗ | Commercial Use
- ✗ | Free Cultural Works
- ✗ | Meets Open Definition